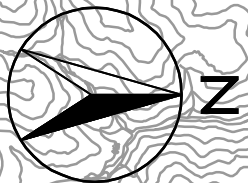
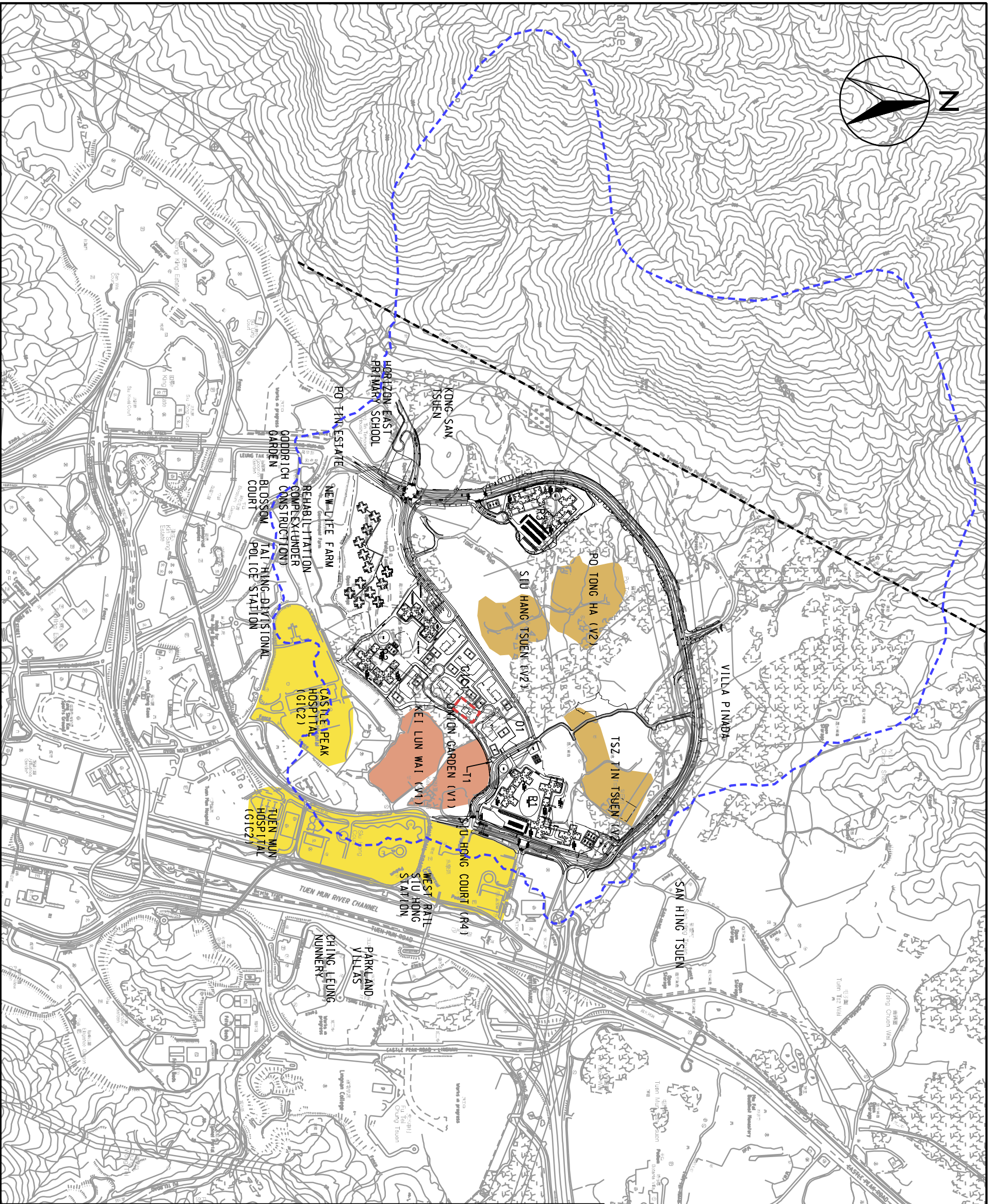


MAUNSELL | **AECOM**
Maunsell Consultants Asia Ltd

AGREEMENT NO. CE 21/2005 (CE) - PHASES 1 AND 2 -
FORMATION, ROADS AND DRAINS IN AREA 54, TUEN MUN
ENVIRONMENTAL, TRAFFIC AND DRAINAGE IMPACT ASSESSMENT REVIEW - INVESTIGATION - ADDITIONAL
SERVICES NO. 2 - ENVIRONMENTAL IMPACT ASSESSMENT FOR TUEN MUN AREA 54 SEWAGE PUMPING STATION
RESIDUAL VISUAL IMPACTS IN CONSTRUCTION PHASE



INTENSITY OF VISUAL IMPACT

- SUBSTANTIAL-POSITIVE
 - MODERATE-POSITIVE
 - SLIGHT-POSITIVE
 - INSUBSTANTIAL
 - SLIGHT-NEGATIVE
 - MODERATE-NEGATIVE
 - SUBSTANTIAL-NEGATIVE
 - NOT APPLICABLE
- LEGEND:**
- SITE BOUNDARY
 - LIMIT OF VISUAL INFLUENCE
 - FIRING RANGE BOUNDARY

SCALE	1 : 10000	DATE	OCT. 2007
CHECK	ELT/W/ST	DRAWN	LX
JOB NO.	73905	DRAWING NO.	FIGURE 7.5.5
		REV	